

**MarLiJu**<sup>MJ</sup>  
*Mazel Life Junction*



# **MVScript™ / MVAmp™**

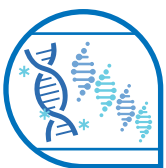
## **cDNA Synthesis & Gene Amplification**

### **Touch Your Experiment**

## **Just Put it In**

**Routine PCR**  
**Intact cDNA Synthesis**  
**Convenient qPCR**

**Don't Think Too Much**  
**Just Put your template In**  
**Simplicity Makes Reproducibility**



# MVScript™ cDNA Synthesis Kit



(Kit including RNase Inhibitor, Random Hexamer, Oligo dT, etc)

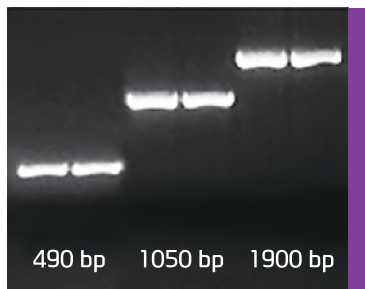
No more work, Just put your RNA template in the tube for cDNA Synthesis with

## MVScript™ cDNA Synthesis Mastermix

Self-customize for more delicate cDNA synthesis conditions with

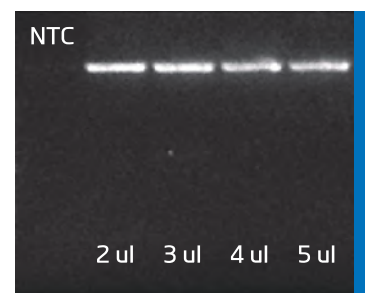
## MVScript™ cDNA Synthesis Kit

# MVAmp™ Taq PCR Mastermix



Simply put your template in the tube for Routine PCR

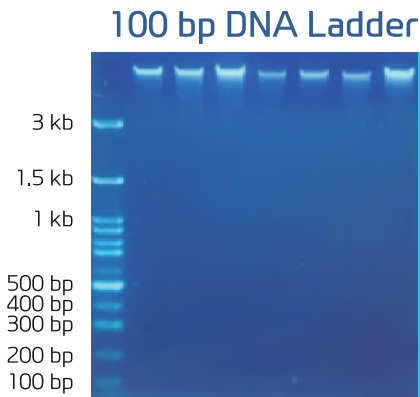
MVAmp™ Taq PCR Mastermix successfully amplified various targets from Lambda DNA as a template.



MVScript™ cDNA Synthesis Kit successfully constructed cDNA from 1 ng of human total RNA at 50°C and then 1.5 kb human gene was amplified with various amounts of cDNA using MVAmp™ Hstart Taq amplified.

Cat.No	Products	Size
A-10001	MVScript™ cDNA Synthesis Mastermix (2X, dT20)	50 tests
A-10002	MVScript™ cDNA Synthesis Mastermix (2X, dT20)	100 tests
A-20001	MVScript™ cDNA Synthesis Mastermix (2X, Random Hexamer)	50 tests
A-20002	MVScript™ cDNA Synthesis Mastermix (2X, Random Hexamer)	100 tests
A-30001	MVScript™ cDNA Synthesis Kit (Rnase Inhibitor, dT20, Random Hexamer)	50 tests
AP-10001 / 10005	MVAmp™ Taq PCR Mastermix (2X, without dye)	1ml / 1ml x 5
AP-10001D / 10005D	MVAmp™ Taq PCR Mastermix (2X, with dye)	1ml / 1ml x 5
AP-10001H / 10005H	MVAmp™ Hstart™ Taq PCR Mastermix (2X, without dye)	1ml / 1ml x 5
AP-10001HDU / 10005HDU	MVAmp™ Hstart™ Taq PCR Mastermix (2X, with dye & UDG)	1ml / 1ml x 5
AQ-10005	MVAmp™ Green qPCR Mastermix (2X)	1ml x 5
AQR-10001G	MVAmp™ Green RT-qPCR Mastermix (2X)	1ml
AQR-10001GK	MVAmp™ Green RT-qPCR Kit	100 tests
AQR-10001U	MVAmp™ RT-qPCR Mastermix (2X, with UDG)	1ml
AQR-10001UK	MVAmp™ RT-qPCR Kit (with UDG)	100 tests

# MVCheck™ Safe GEL Staining Dye



1.5 % Agarose gel was cast as 1X concentration of MVCheck™ Safe GEL Staining Dye and 5 ul of MVCheck™ 100 bp DNA Ladder as marker and genomic DNAs from 7 blood samples were loaded.



1.2 % Agarose gel was cast as 1X concentration of MVCheck™ Safe GEL Staining Dye and 5 ul of MVCheck™ 1 kb plus DNA Ladder as marker and genomic DNAs from 7 blood samples were loaded.

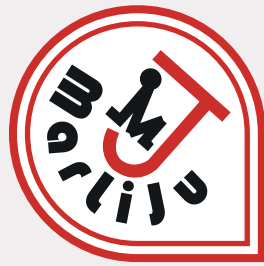
# MVCheck™ DNA Ladder

**Sharper & Brighter**  
With MVCheck™ DNA Ladder  
& Safe GEL Staining Dye

Check your band on both UV  
and Blue LED transilluminators  
without Stress



Cat.No	Products	Size
C-10100	MVCheck™ 100 bp DNA Ladder	500ul
C-11000	MVCheck™ 1 kb Plus DNA Ladder	500ul
C-30500	MVCheck™ Safe GEL Staining Dye (10,000 X)	500ul
C-20001	MVCheck™ 6X DNA Loading Dye	1ml
R-10100 / 10500	MVCheck™ Agarose (100g / 500g)	100g / 500g
C-52017	MVCheck™ Premade DNA Staining Gel (17 wells, 2% Agarose, 0.5X TAE, w/EtBr)	(W : 105mm / H : 60mm), 20ea
C-52012	MVCheck™ Premade DNA Staining Gel (12 wells, 2% Agarose, 0.5X TAE, w/EtBr)	(W : 105mm / H : 60mm), 20ea
C-52008	MVCheck™ Premade DNA Staining Gel (8 wells, 2% Agarose, 0.5X TAE, w/EtBr)	(W : 55mm / H : 60mm), 40ea
C-52006	MVCheck™ Premade DNA Staining Gel (6 wells, 2% Agarose, 0.5X TAE, w/EtBr)	(W : 55mm / H : 60mm), 40ea



# Marvel Life Junction

© 2018. MarLiJu Co. all rights reserved.



office : MarLiJu BD.,180-3, Chungnyeol-daero, Dongnae-gu, Busan, Republic of Korea

email : talk@marliju.com, web : www.marliju.com